



The Course


The
Dorothy Ley
Hospice

HALLOWEEN BED RACE

SUNDAY, OCTOBER 24, 2010



The Dorothy Ley Hospice is a volunteer-driven, staff managed organization offering compassionate care to people living with the challenges of a life-limiting illness or loss. Our goal is to provide comfort and support so they can live every day to the fullest, with dignity, meaning and hope. All of our services are offered at no-charge thanks to the generosity of our donors, government funding and the support from our community partners.

Our programs and services meet the physical, emotional, spiritual and support needs of individuals as well as their family members and care providers. Any person requiring palliative care or bereavement support can access our services.

For more information about our services, to volunteer, or to make a donation please contact us at:

Mark on your Calendar!

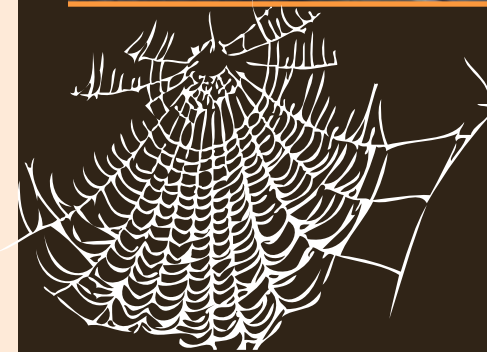
Doves of Remembrance

End of November - December

Cloverdale Mall

Volunteers Wanted

Sign up or register for events today
by calling 416-626-0116.



On Bloor Between Royal York and Prince Edward-North Side
visit www.dlhospice.org for more information


The
Dorothy Ley
Hospice

220 Sherway Drive
Etobicoke, Ontario M9C 0A7
t: 416-626-0116 / f: 416-626-7285
www.dlhospice.org

Charitable No: 13019 3394 RR0001

220 Sherway Drive, Etobicoke, Ontario M9C 0A7 (416) 626-0116

www.dlhospice.org

Proudly presented by:






You have **great** Real Estate.
Shouldn't you have a **great** real estate Sales Rep?



416.231.3000
416.817.3747

ROYAL LePAGE
3031 BLOOR STREET WEST
TORONTO, ONTARIO
M8X 1C5
jgludish@trebnet.com
www.joannegludish.com

JOANNE GLUDISH
SALES REPRESENTATIVE

AWARD WINNING SERVICE FOR 20 YEARS
Full - time Client Care Manager
Professional marketing materials
Home staging consultation
Professional photography
Digital floorplans
Virtual tours

Let's begin...
JoAnne Gludish

